

2026 Victorian Election Policy Priorities

Delivering the sustainable supply of
Heavy Construction Materials

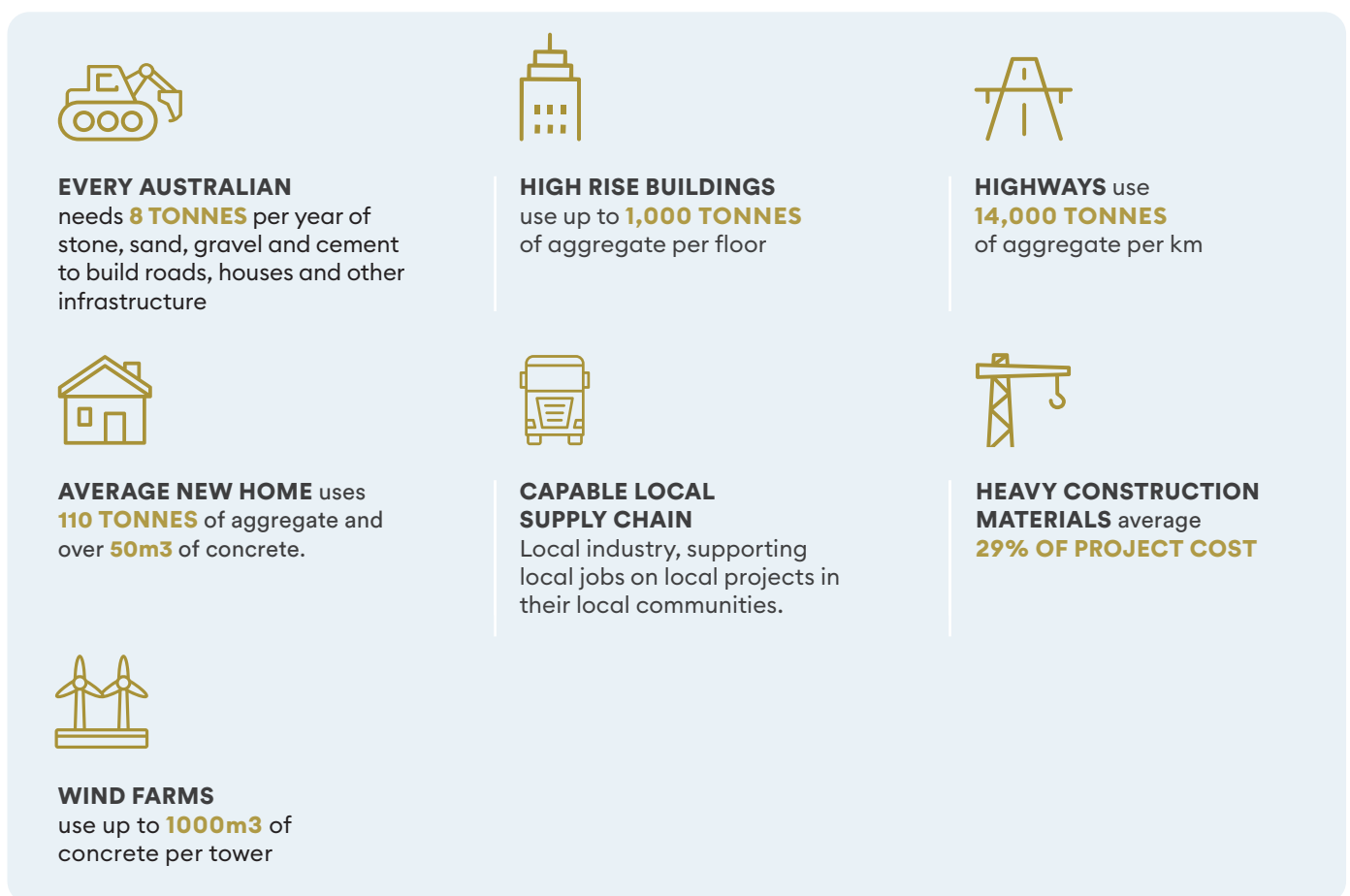


Key Facts

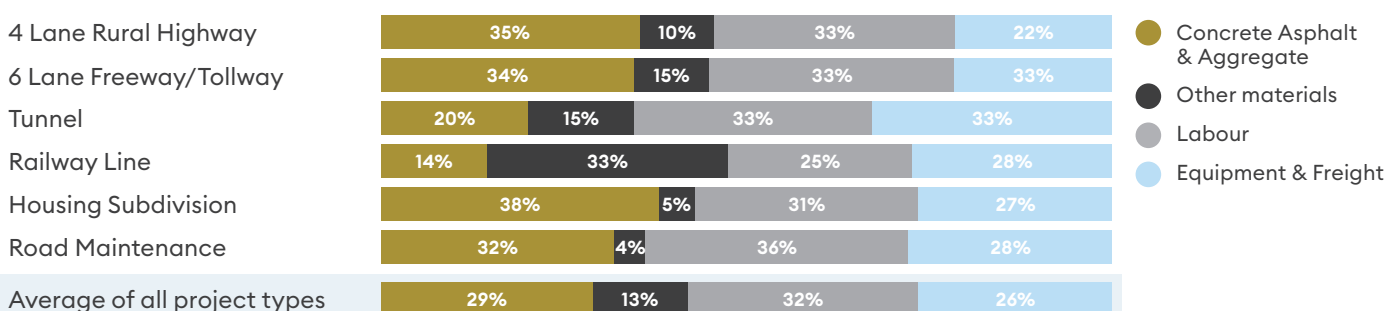
The heavy construction materials industry is made up of cement manufacturing & distribution facilities, concrete batching plants, hard rock quarries, and sand and gravel extraction operations.

Our materials are vital to delivering the transport and social infrastructure, energy projects and housing essential to Australia's growth. The sector contributes \$20.7 billion to Australia's GDP and supports around 113,000 jobs across the country. Our industry also fuels Victoria's construction sector, contributing \$3.17 billion to the state economy and supporting more than 15,600 jobs across the state.

DRIVING AFFORDABILITY AND SUPPORTING SOCIAL & ECONOMIC DEVELOPMENT



ESTIMATED PROPORTIONS OF TOTAL PROJECT COSTS BY TYPE OF PROJECT



Source: Macromonitors (2022)

Percentage of total costs

Affordable materials support affordable infrastructure

Victoria's transport, renewable energy, water, housing, defence, and social infrastructure all start with cement, concrete and aggregates, with demand for these construction materials forecast to increase.

SUPPLY CHAIN RISK

An efficient supply chain will provide for the sustainable, reliable, affordable and predictable supply of heavy construction materials to meet the growing needs of Victoria.

Victoria has made meaningful progress in reforming quarry planning and approvals. Yet continued action is essential to secure the materials needed for housing, infrastructure, and economic growth.

The Joint Ministerial Statement on Extractive Resources provides a strong foundation, outlining clear steps to unlock new quarry resources and ensure supply close to where it is needed. But this work must be sustained and translated into real, measurable outcomes.

Risks to achieving an efficient, reliable local supply chain include:

- Delays in declaring new Strategic Extractive Resource Areas, (SERAs) limiting access to vital construction materials.
- New duty-based mining legislation falling short of its promise, risking missed opportunities for streamlined approvals and genuinely risk-based compliance.
- Poor coordination of biodiversity and environmental requirements across Federal, State, and Local governments, creating uncertainty and duplication.
- Overdue quarry rehabilitation bond framework reform required to encourage positive environmental outcomes, while enabling investment and cost-effective extraction of vital resources.
- A complex and ineffective rehabilitation framework that continues to disappoint both communities and industry.

- Rapid and disproportionate increases in industry-specific fees and taxes, discouraging investment and putting supply at risk.
- To keep Victoria building, reform must continue—delivering certainty for industry, communities, and the state's future growth.
- Prescriptive standards and specifications acting as barriers to the increased use of innovative materials that will decarbonise the economy.

With continued, coordinated reform across Government, the industry stands ready to play its part in supporting the construction sector as the engine for economic growth – driving the road dollar further.

RESOURCES VICTORIA APPROVAL COORDINATION UNIT (RVAC) HELPS SECURE NEW RESOURCES

Continued funding for RVAC is vital to continue to unlock vital supplies close to where quarry materials are needed most. RVAC is nation leading and CCAA will be advocating for other jurisdictions to take up similar reforms.

RVAC has reported that in 2024-25, a total of 93 million tonnes of resource has been approved, shovel ready with no further approvals required.

As much of this material is in regional areas or not of sufficient quality to be used in high specification end uses, there is continued need to continue this program to ensure supply is sufficient to meet the increasing demand for quality quarry materials.



JOINT MINISTERIAL STATEMENT ON EXTRACTIVE RESOURCES

The Statement renews the Government's commitment to drive ongoing investment in the extractive resources sector. New investments in the state's resources and expansion of current assets are crucial to ensure the State continues to deliver major infrastructure projects and Victoria's Housing Statement.



Priority Actions:

1. Prioritise extractive resources and expedite permissions for new resource supplies
2. Facilitate timely approvals by continued funding for the Resources Victoria Approvals Coordination unit.
3. Secure future supply by expanding Strategic Extractive Resource Areas and strengthen state planning policies
4. Build social licence through reforming legislation that will replace a complex and outdated work approvals framework, with a contemporary and transparent regulatory system based on a statutory duty for managing risk.

WHAT DOES THIS MEAN FOR VICTORIA...



Short term supply risk, especially for concrete sand



Long lead time to approve new resources



Increasing demand

- Increased risk of hard rock, sand, concrete, and cement supply shortages to infrastructure, renewable energy and housing construction.

- Less affordable homes, roads, and infrastructure.

- Project delays.
- Loss of investment & jobs.
- Increased political risk.



FACILITATING DECARBONISATION

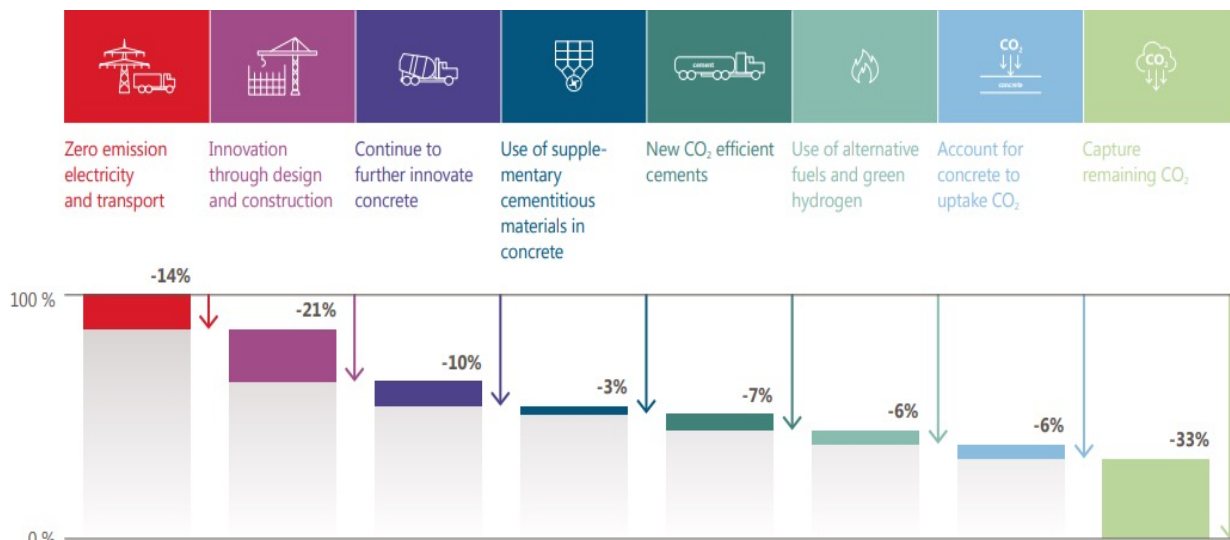
As the demand for concrete grows to fuel the State’s infrastructure, housing, renewable energy, and sustainable growth ambitions, there is an urgent need to work together to enable the delivery of Lower Carbon solutions.

The Heavy Construction Industry’s Climate Ambition Statement released in 2021, and the Industry Decarbonisation Pathways Report outlines the industry’s commitment to work towards decarbonisation throughout the value chain, and emphasises that achieving these significant decarbonisation objectives can only be achieved through collaboration.

The establishment of public procurement practices that reflect government policies on reducing emissions and encouraging the circular economy are required to achieve our collective net zero goal.

Australian Standards and State based infrastructure Specifications also play a critical role in enabling decarbonisation in the built environment. Performance-based specifications that do not specify minimum amounts of portland cement, and therefore promote the greater uptake of Mineral Additions and Supplementary Cementitious Materials (SCM) such as fly ash and blast furnace slag are key to achieving our goals.

These issues should be addressed by the development of a **comprehensive Heavy Construction Materials Plan**



Source: Decarbonisation Pathways for the Australian Cement and Concrete Sector, 2021

A Heavy Construction Materials Plan

CCAA calls on the incoming Government to develop a comprehensive Heavy Construction Materials Plan covering cement, aggregates, sand, and concrete which builds on the Joint Ministerial Statement on Extractive Resources and will aim to:

- Ensure proximate and adequate materials supply for housing, infrastructure and renewable energy projects.
- Protect extractive resources and concrete batch plants from urban encroachment and sterilisation.
- Facilitate decarbonisation and the circular economy.
- Ensure fees and taxes remain competitive and proportionate, encouraging continued investment and supporting a resilient local construction materials supply.
- Improve heavy vehicle access, including ensuring that redevelopment of the Fishermans Bend urban renewal area does not compromise the essential operations of the Melbourne Cement Facility.

THE PLAN SHOULD:

- Guarantee a smooth transition to the new duty-based mining legislation commencing 1 July 2027, supported by timely guidance, implementation planning, and sector readiness.
- Deliver the full suite of promised planning, development approval, and compliance reforms alongside the new legislation to ensure the system is genuinely streamlined and risk-based.
- Reduce unnecessary red tape, particularly in biodiversity and cultural heritage processes. Industry is not seeking lower standards—only a practical, workable pathway to meet them.
- Accelerate the delivery of the next tranche of seven Strategic Extractive Resource Areas (SERAs) across Melton, Greater Geelong, Mitchell, Latrobe, Moorabool, Whittlesea, and Golden Plains.
- Enable greater ability for the production and delivery of construction material outside of peak hours to increase efficiency and reduce congestion.
- Strengthen the rehabilitation framework so it meets community expectations, provides clarity for industry, and supports sustainable land use outcomes.
- Streamline training progression pathways for heavy vehicle drivers
- Encourage public procurement practices that reflect government policies on reducing emissions.
- Remove barriers for lower carbon concrete by moving from prescriptive to performance based specifications.
- Support the introduction of lower carbon cement standards.
- Support the cement and concrete industries ambition to deliver net zero cement and concrete to the Australian market by 2050, and support the circular economy, through supporting initiatives such as those set out in the independent report [Decarbonisation Pathways for the Australian Cement and Concrete Sector](#).



IMPLEMENTING THESE CHANGES NOW WILL:



Help industry achieve its ambition of delivering Net Zero concrete by 2050



Deliver affordable infrastructure and housing



Attract essential investment



Keep people and communities safe and working



Support timely delivery of critical infrastructure



Foster greater partnerships between Government and industry for the betterment of Victoria



Ensure Victoria continues to build its economy



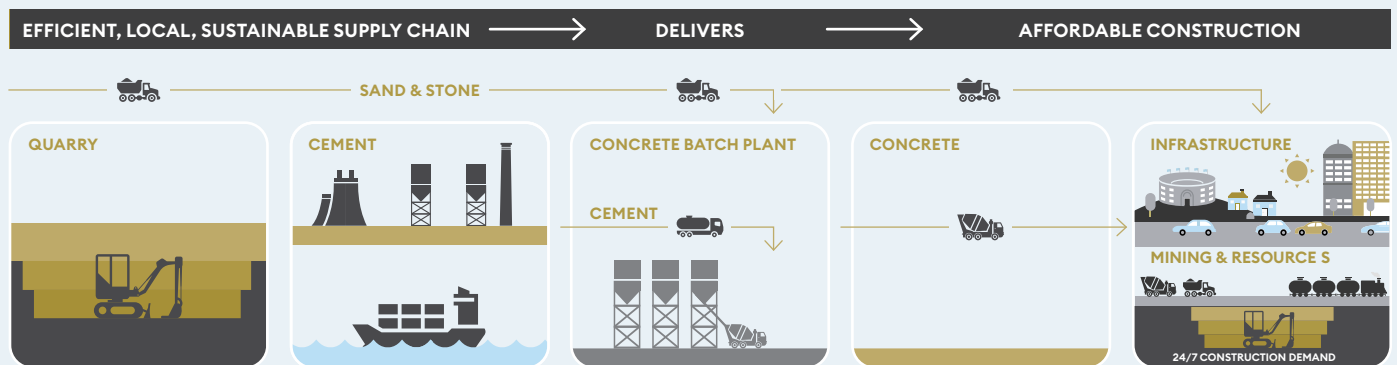
Deliver affordable renewable energy projects for Victoria



Support the circular economy and decarbonisation

Snapshot

HEAVY CONSTRUCTION MATERIALS SUPPLY CHAIN



INDUSTRY ISSUES

<ul style="list-style-type: none"> ✗ Complex & costly approvals process ✗ Multiple sets of regulations & government agencies ✗ Resource security & urban encroachment ✗ Increasing demand for materials 	<ul style="list-style-type: none"> ✗ Keep port facilities open and efficient for cement ✗ Fishermans Bend traffic congestion 	<ul style="list-style-type: none"> ✗ Restrictive operating hours ✗ Prescriptive specifications 	<ul style="list-style-type: none"> ✗ Traffic congestion 	<ul style="list-style-type: none"> ✗ Skilled labour ✗ Maintain pipeline of infrastructure projects ✗ Business taxes and royalties ✗ Investment confidence and finance availability
---	--	--	--	--

FACILITATING AFFORDABILITY AND ECONOMIC GROWTH THROUGH REGULATORY REFORM

WHAT NEEDS TO CHANGE

<ul style="list-style-type: none"> ✓ New duty based mining legislation delivers promised reforms ✓ Reduce biodiversity and cultural heritage red tape ✓ Implement full suite of Strategic Extractive Resource Areas ✓ Strengthen the rehabilitation framework ✓ Ensure industry fees and taxes remain competitive ✓ Improve heavy vehicle access 	<ul style="list-style-type: none"> ✓ Fishermans Bend traffic management plan that reduces traffic congestion ✓ Ensure internationally competitive energy costs 	<ul style="list-style-type: none"> ✓ Streamlined process to co-locate construction material manufacturing with quarries ✓ Outcomes focused material specifications 	<ul style="list-style-type: none"> ✓ Streamlined heavy vehicle access approvals ✓ Implement new training progression pathways for heavy vehicle drivers in line with national reforms 	<ul style="list-style-type: none"> ✓ Increase investment in social housing ✓ Balanced delivery of State/Local Government infrastructure projects ✓ Increase road maintenance ✓ Minimise payroll tax, land and property taxes ✓ Implement procurement models that reflect government policies on reducing emissions ✓ Support for skilled international migration
--	--	--	---	--